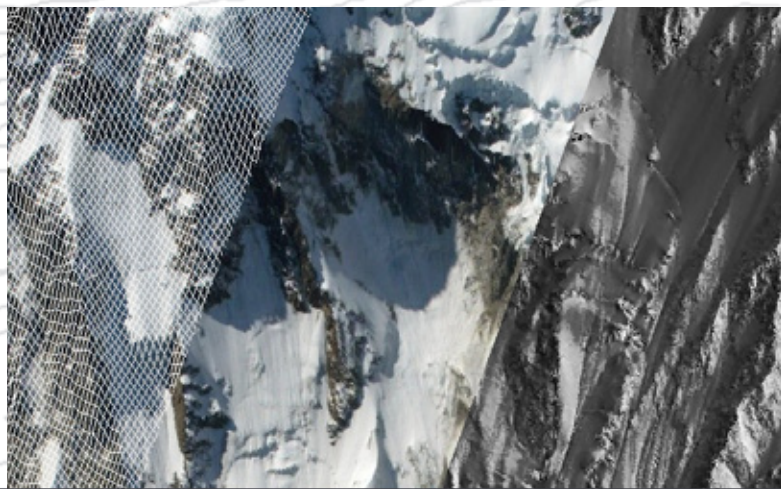


HELIMAP ® S Y S T E M

Swiss Precision Helicopter Mapping  *we map the inaccessible*

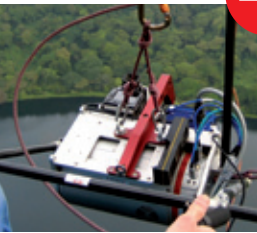
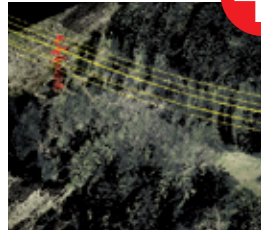




Helimap System®

Short portrait

Helimap System® is the outcome of an applied research project run jointly by an established group of Swiss survey engineering companies and the Swiss Federal Institute of Technology in Lausanne (EPFL). Helimap System SA was incorporated in 2008 and provides a truly unparalleled know-how in 3D mapping. As Helimap System SA is integrated in the group of Swiss survey engineering firms, it combines forward thinking technologies (such as the proprietary hand-held Helimap System®) with 30+ years of experience in survey engineering in Switzerland for large infrastructure projects, estate management and land management. At Helimap System SA, we provide Swiss quality professional services to private and public customers worldwide.



Helimap System®

Your partner for customized high accuracy 3D mapping

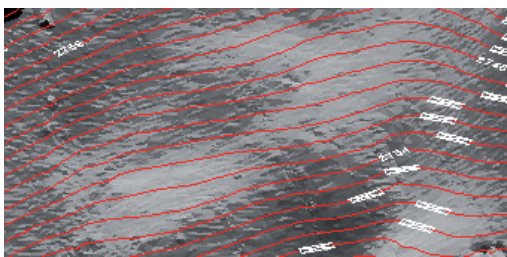
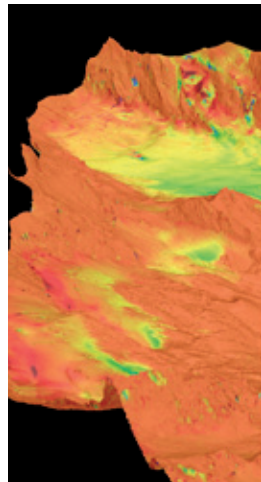
Helimap System SA provides high quality, Swiss precision 3D mapping services using the latest available technology.

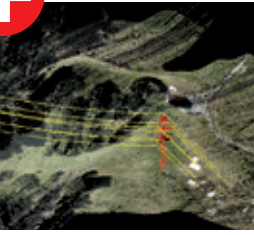
- + Combination of LiDAR and digital photogrammetry in a proprietary technology
- + Fast and flexible deployment, all over the world
- + Suitable and economical for small to medium areas (5 to 10,000 ha), anywhere in the world
- + Designed for complex terrain (cliff, mountains) thanks to proprietary oblique mapping capabilities
- + Guaranteed mapping accuracy 5-10cm without ground signaling, down until 2 cm with ground signaling

Helimap System®

Exclusive services

- + Services tailored to your needs
- + Support in the integration of high-precision 3D data into your project
- + High Tech: latest airborne systems and software
- + Management of helicopters, 1 hour deployment upon arrival
- + Hundreds of successful projects and clients





Helimap System®

Innovative mapping products

Basic products

- + Digital Terrain or Surface Models (DTM/ DSM) with very high density (1 to 150 points per m²)
- + High resolution orthophotos (2 to 10 cm pixel)
- + Stereo plotting and 3D digitizing of punctual or linear elements

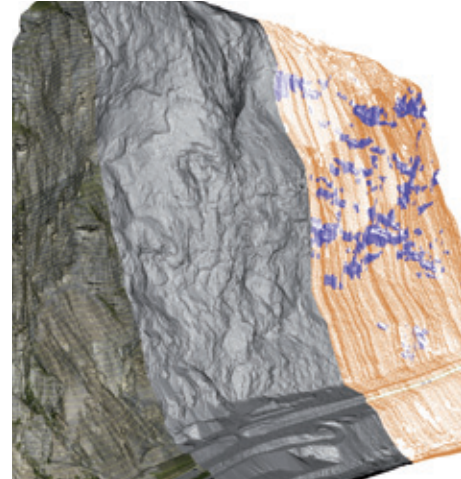
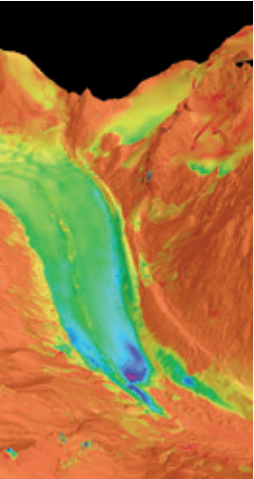
Derived products

- + Volume, profiles, slope, aspect, contours
- + Classification of ground cover: roads, roofs, buildings, forests, hedges, power lines, obstacles
- + Tracking of spatial evolution over time: deformations, movements, erosion, sedimentation, deposits
- + 3D modeling for virtual reality and video games
- + GIS compatible information generation: superimposition and cross-analysis of various data sets

Helimap System®

Application fields

- + **Infrastructures / corridors:** Power lines, railways, roads, pipelines, cable cars, projects (as-built survey, planning, variants, site integration, project management and follow-up, solution identification)
- + **Natural hazard / environment:** Disaster management, landslides, avalanches, floods, rock falls, ice falls, glaciology, geology, land use
- + **Continuous assessment:** gravel pits, mine, quarry, forestry, oil & gas, water
- + **Specialized mapping:** Oblique (cliffs, steep slopes, geomorphology), high risk zones





Headquarters

Helimap System SA
Le Grand-Chemin 73
CH-1066 Epalinges
Tel + 41 21 785 0202
Fax +41 21 785 0209
info@helimap.ch
www.helimap.ch

Branch office

Helimap System AG
Mühlezelgstrasse 15
CH-8047 Zürich
Tel + 41 43 311 1890
Fax +41 43 311 1899
zurich@helimap.ch

Swiss Precision Helicopter Mapping  **we map the inaccessible**